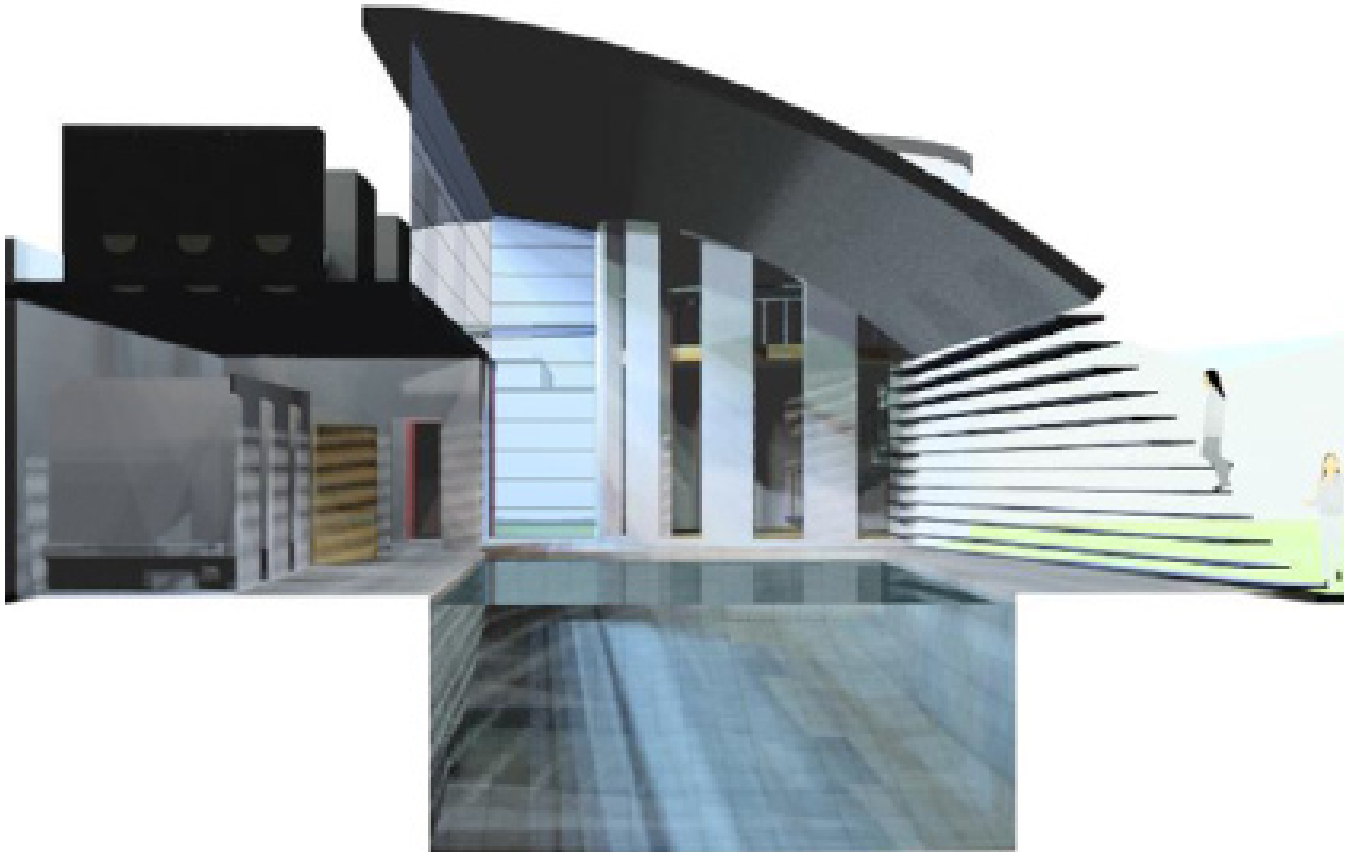


# Archdeacon Cambridge's Primary School, Twickenham

---



Client: Archdeacon Cambridge School  
Contractor: N/A  
Project Manager: N/A  
Structural Engineer: N/A  
Quantity Surveyor: N/A  
Contract Value: £500,000

Feasibility study and outline design of a new indoor swimming pool and sports pavilion as part of a primary school, replacing an existing sub-standard swimming pool on site.

---

#### London Office

11-29 Fashion Street  
London E1 6PZ

t +44 (0)207 426 3630  
f +44 (0)207 426 3631  
london@dlgarchitects.com

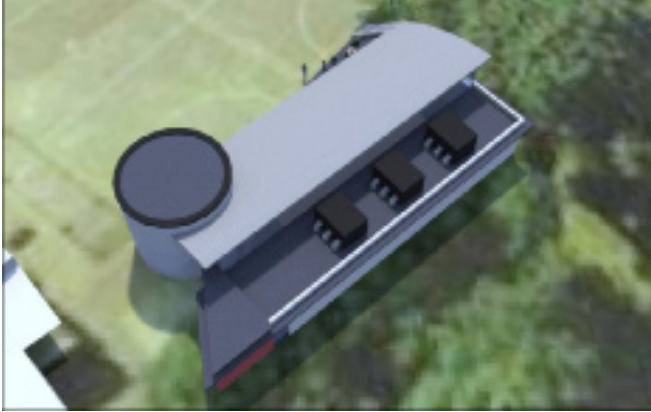
#### Leeds Office

One Brewery Wharf Waterloo Street  
Leeds LS10 1GX

t +44 (0)113 247 1222  
f +44 (0)113 220 4520  
leeds@dlgarchitects.com

## Archdeacon Cambridge's Primary School, Twickenham

---



Feasibility study and outline design of a new indoor swimming pool and sports pavilion as part of a primary school, replacing an existing sub-standard swimming pool on the site. The design combined the school's own needs with a potential for providing an out of hours community facility which could form a further source of revenue for the school.



The design includes a raisable pool floor, both to facilitate disabled access to the pool, and so that the facility could also be used as a dry hall when the floor was completely raised. The location and form combined to work with the external landscape of the school grounds, providing potential changing areas for the external playing fields, providing a control point to the school and improved security whilst 'signposting' the facility from the school drive. The form of the roof additionally provided bleachers from which field sports outside could be watched.



The design was formulated upon sustainable principles and featured passive solar heating for the water and heat reclamation for warm air.

The design incorporated considerable additional research, drawing upon DLG's previous experience in pool design, including recommendations on purification, pool construction and automatic drowning alarms.

