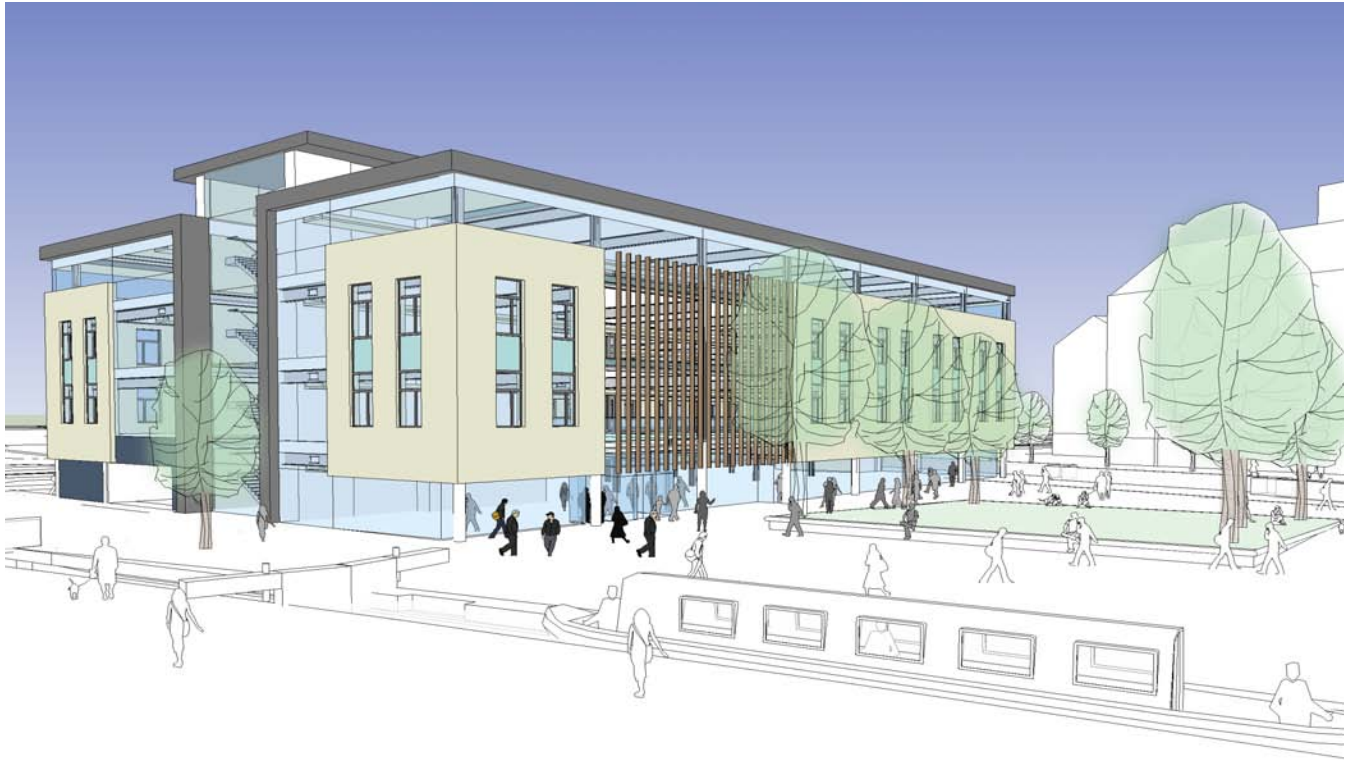


Kirklees Council New Offices



Client: Strategic Sites
Contractor: N/A
Project Manager: N/A
Structural Engineer: ARUP
Quantity Surveyor: Richard Boothroyd Associates (RBA)
Contract Value: £10.2 million

Project Completion: June 2010

DLG were selected following a competition to masterplan this 7 acre site. This masterplan received unanimous support at planning committee in September 2007. Since this time DLG have been developing several buildings across the site.

London Office

11-29 Fashion Street
London E1 6PZ

t +44 (0)207 426 3630
f +44 (0)207 426 3631
london@dlgarchitects.com

Leeds Office

One Brewery Wharf Waterloo Street
Leeds LS10 1GX

t +44 (0)113 247 1222
f +44 (0)113 220 4520
leeds@dlgarchitects.com

Kirklees Council New Offices



DLG were selected following a competition to masterplan this 7 acre site. This masterplan received unanimous support at planning committee in September 2007. Since this time DLG have been developing several buildings across the site.



DLG and our client have been in discussion with Kirklees Council (KC) over the past 12 months which has culminated in the detailed proposals for this 75,000 sqft office building overlooking the new public square.

The scheme incorporates:

- Waterfront location (canal and River Colne)
- Grade A accommodation
- A model for 21st century working in Yorkshire
- Shallow floor plates to maximise natural lighting
- Natural ventilation
- Biomass heating system
- Use of adjacent canal to provide cooling
- Night time cooling using buildings exposed thermal mass
- Open plan office areas
- Flexible 1.5m planning grids
- Internal “streets” acting as meeting points for staff
- Meeting rooms at ground floor overlook square and can be used by internal and external users
- Below ground parking 75 spaces
- Etf covered atrium – providing natural lighting and ventilation
- Rainwater harvesting

